



- 1 Global Headquarters & Manufacturing
NEW BERLIN, WISCONSIN, U.S.A.
- 2 U.S.A. Manufacturing
VALPARAISO, INDIANA, U.S.A.
- 3 U.S.A. Manufacturing
NORTH HAVEN, CONNECTICUT, U.S.A.
- 4 U.S.A. Manufacturing
TRAVERSE CITY, MICHIGAN, U.S.A.
- 5 U.S.A. Manufacturing
TRACY, CALIFORNIA, U.S.A.
- 6 Europe Sales & Distribution
SCHWAIG, GERMANY
- 7 Europe Manufacturing
BIELEFELD, GERMANY
- 8 Asia Sales & Distribution
SHANGHAI, CHINA



DYNATECT[™]
DYNAMIC EQUIPMENT PROTECTION

HOW TO GET THE BALL ROLLING...

In the final year of World War II, with sporting goods manufacturers still busy churning out military apparel, Gerald "Doc" O'Rourke couldn't find a new football for his nephew. But instead of giving up, Doc reverse-engineered an old ball. The result was of such excellent quality, it earned him a purchase order from Sears, Roebuck and Co.

A&A Manufacturing, today known as Dynatect, was born.

Pioneering new sewing processes, Doc soon realized that his systems could be used to improve the plant manufacturing equipment that he saw in his day job. He shifted the focus of A&A, introducing a range of sewn industrial leather bellows.

The rest, as they say, is history.

A lot has changed since those first machine protection bellows. Dynatect now have manufacturing plants located across the planet. The flagship product ranges, Gortite and Gortrac, have become industry-recognized names. Clients number in the tens of thousands. Designs over 500,000.

From the company's humble beginnings in the founder's garage, Dynatect has grown to manufacture everything from heavy-duty way covers for steel mills to miniature precision slip clutches for medical devices. However, at the very core, our business remains

exactly the same: we still identify specific needs in the field and use this knowledge to engineer perfect customized solutions. That includes knowing, for example, how machine roof covers react to the cleaning agents used in the world's dirtiest factories. Or what type of cable carrier is best suited to the velocity of your moving component. Or how to design a large bellow so that air can escape as it collapses.

We know these things because, staying true to our founding curiosity and innovative spirit, we listen to people. Our technical advisors are on the ground talking to end users, and they understand how to translate that input into well-defined briefs for our engineering teams. That's how it's possible for over 98% of new Dynatect designs to meet application standards on the very first production piece – with turnaround and delivery in as little as one day.

At Dynatect, we welcome great ideas from anyone at any time, growing our human capital exponentially for every new employee and every new acquisition. That way, we're always evolving, always considering novel ways of making what's great even better. So, whether you're in the market for industrial equipment protection, looking for a design partner, or you simply want to know a bit more about Dynatect, get in touch with us today.

The ball is in your court.

CONTACT

GLOBAL HEADQUARTERS

2300 South Calhoun Road
New Berlin, WI 53151

phone: +1 262 786-1500
fax: +1 262 786-3280
email: sales@dynatect.com

DYNATECT.COM

FORMERLY A&A MANUFACTURING

CORPORATE OVERVIEW

With eight facilities, tens of thousands of worldwide clients, and a library of more than 500,000 customized products, Dynatect's engineers and applications specialists have the industries' largest database of custom product solutions. Our engineers design using their knowledge of practical applications in the field – just like Dynatect's founder Gerald "Doc" O'Rourke did some 65 years ago. Thanks to comprehensive vertical integration, we also control the entire manufacturing process. The result? Over 98% of new Dynatect designs meet application standards on the very first production piece.

If you're looking for a functional solution, you just found it.

DYNATECT ADVANTAGE

Every Dynatect sales representative and engineer draws on knowledge and experience gained in a huge number of diverse international markets. No matter what your situation is, you can expect us to understand what you are trying to accomplish. Our history of problem solving enables us to meet application requirements 98% of the time on the very first production piece.

What's more, delivery times are kept to an absolute minimum, thanks to manufacturing plants strategically located in Europe and North America. 95% of quotation requests are solved using configuration tools that generate a solution gained from our 65 years of experience and over 500,000 existing designs.

Simply put: with Dynatect, you get what you need, when you need it.

GET AN EDGE IN YOUR MARKET



Medical Automation

Engineered protection against pinch points or rotational motion for people and products.



Oil and Gas

Protective products for process or mechanical movement, including cable and hose guiding and custom elastomer components.



Transportation

Provide protection from collisions, the environment, and also provide airflow in mechanically dynamic areas.



Construction / Agriculture

Protection of cables and hoses, cylinders, and rotating equipment in difficult, outdoor environments.



Machine Tool

Personnel and equipment protection customized for virtually any moving component.



MRO / Other

Our extensive library of protective solutions allows fast engineering and manufacturing times for minimum downtime.

PRODUCTS

Dynatect designs and manufactures a complete line of components to protect equipment and people. Products can be manufactured from metals, elastomer-covered fabric, nylon, rubber, polyurethane, and PVC.

Protective Coverings

Customized bellows, telescopic covers, roll up covers and doors, walk-on covers, and way wipers for equipment protection.

Cable and Hose Carriers

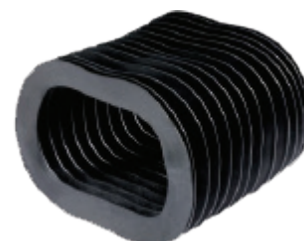
Innovative cable and hose carrier systems, available in both metal and plastic configurations.

Mechanical Motion Control

Miniature mechanical slip clutches and precision ball screws to both regulate and convert rotational force.

Elastomer Components

Compounding and manufacturing of rubber and polyurethane components in many sizes and configurations.



INDUSTRY LEADERSHIP



Manufacturing plants strategically located across the world



98% of new designs meet application standards on first production piece



Vertical integration ensures consistent supply and quality



Extensive library of more than 500,000 designs



Over 60 technical field specialists provide on-site engineering support in North America, Europe and Asia



Turnaround and delivery in as little as a single day